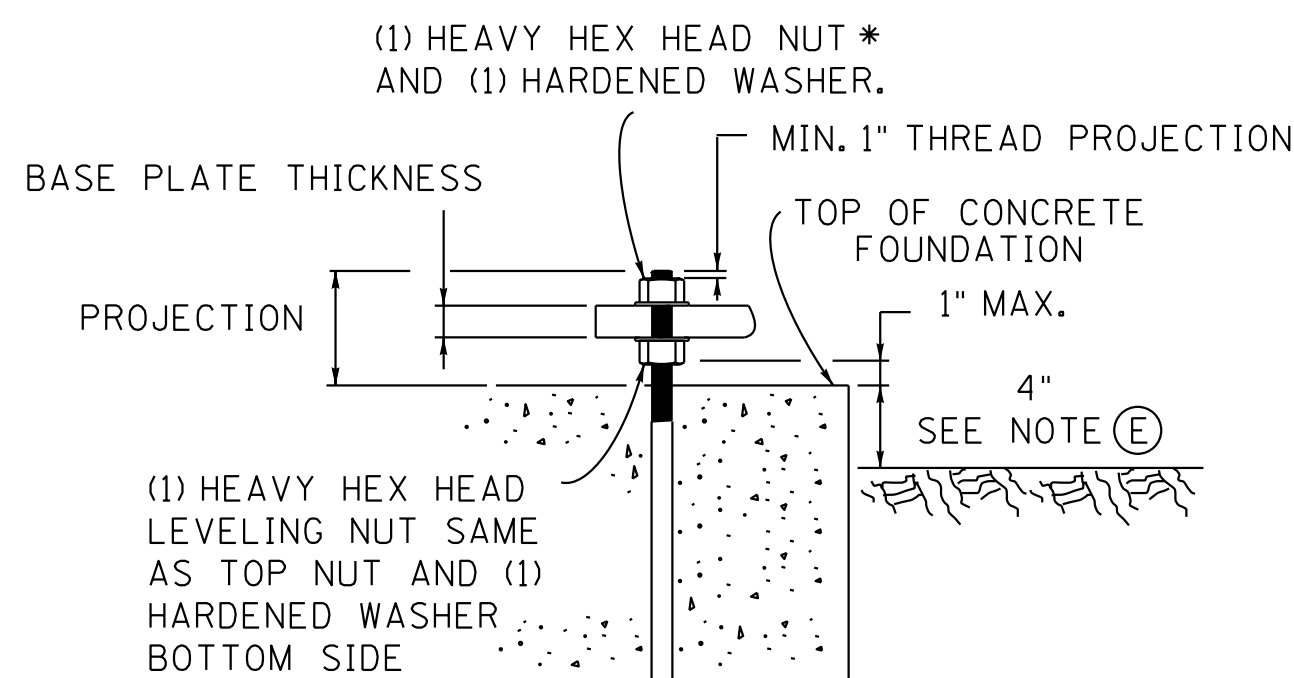
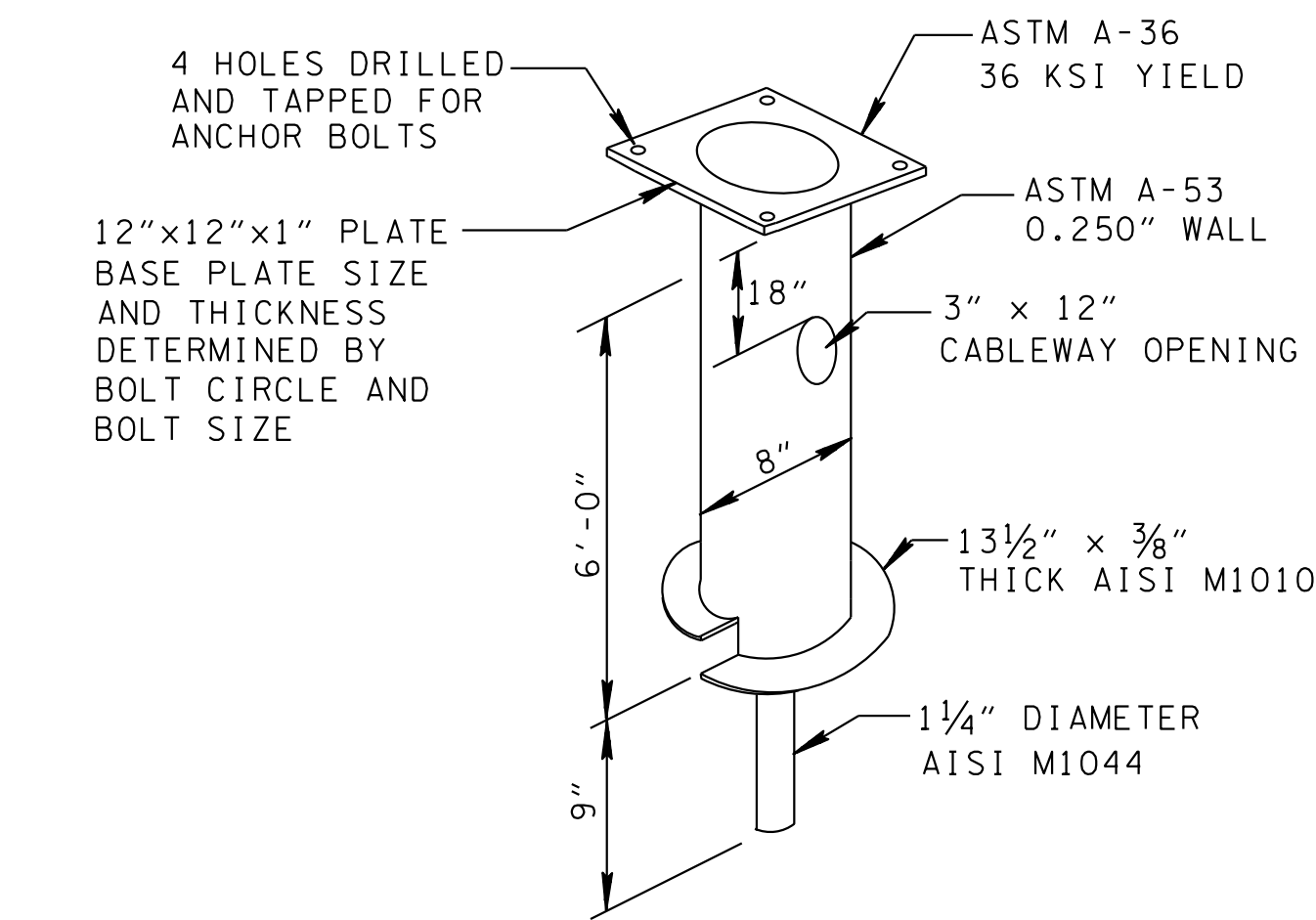


30'-50' STANDARD LIGHTING
ALTERNATE METAL FOUNDATION DETAIL

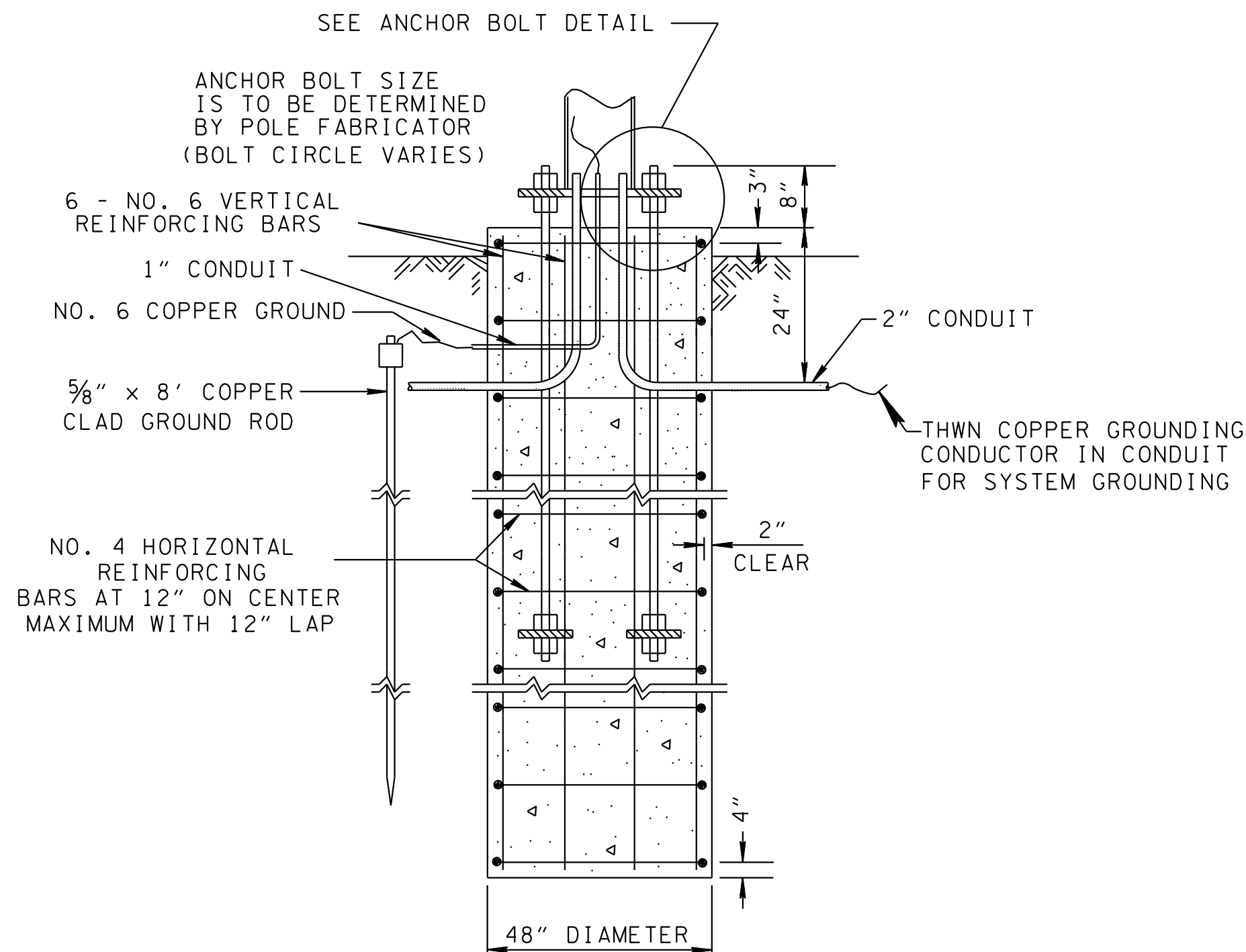


ANCHOR BOLT DETAIL

UNDER NO CONDITIONS WILL DRILLED AND GROUTED ANCHOR BOLTS BE ALLOWED)

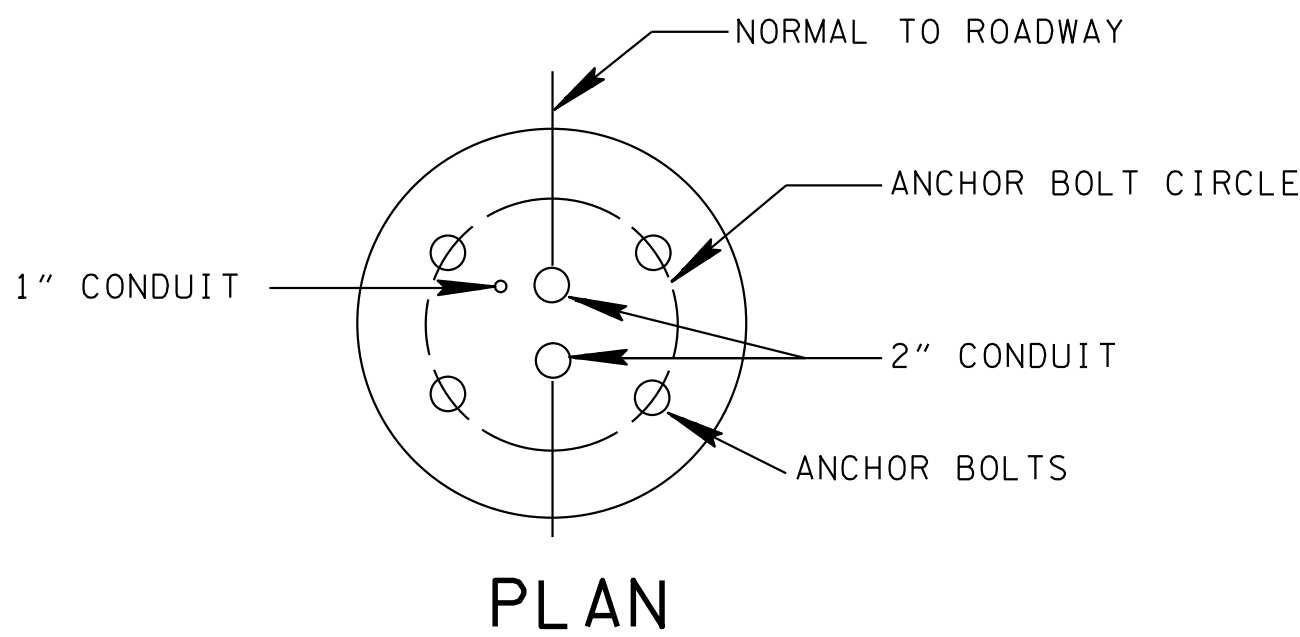
* NOTE: TOP NUT TO BE TORQUED TO PRODUCE 60% YIELD STRESS OF ANCHOR BOLT.

NOTE: DO NOT GROUT BETWEEN BOTTOM OF BASE PLATE AND TOP OF CONCRETE FOUNDATION.

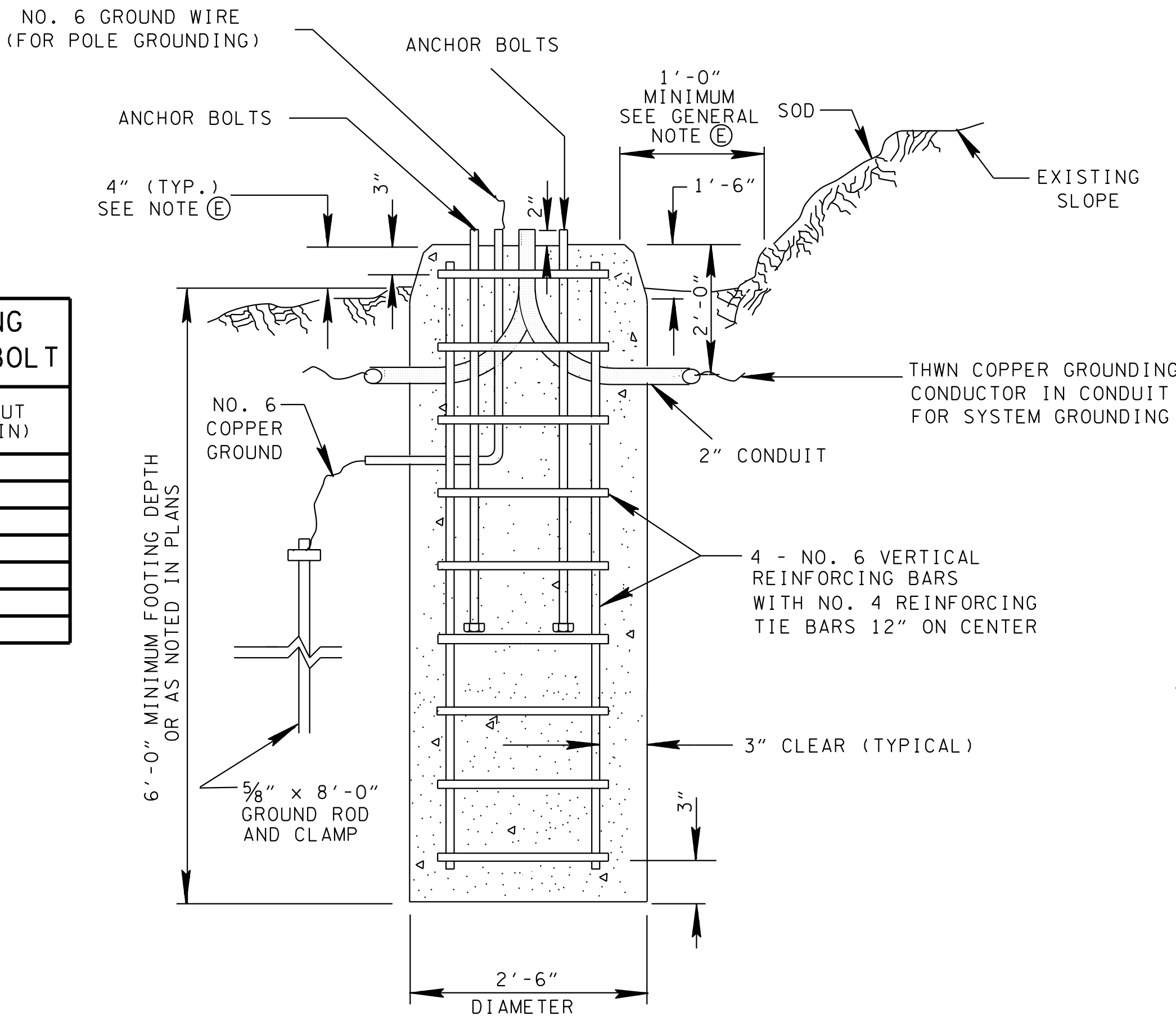


HIGH MAST FOUNDATION DETAIL

REQUIRED BEARING AREA FOR ANCHOR BOLT	
ANCHOR BOLT DIA (IN)	HEAD OR NUT AREA (SQ IN)
1"	1.800
1 1/4"	2.812
1 1/2"	4.050
1 3/4"	5.512
2"	7.199
2 1/4"	9.122
2 1/2"	11.249

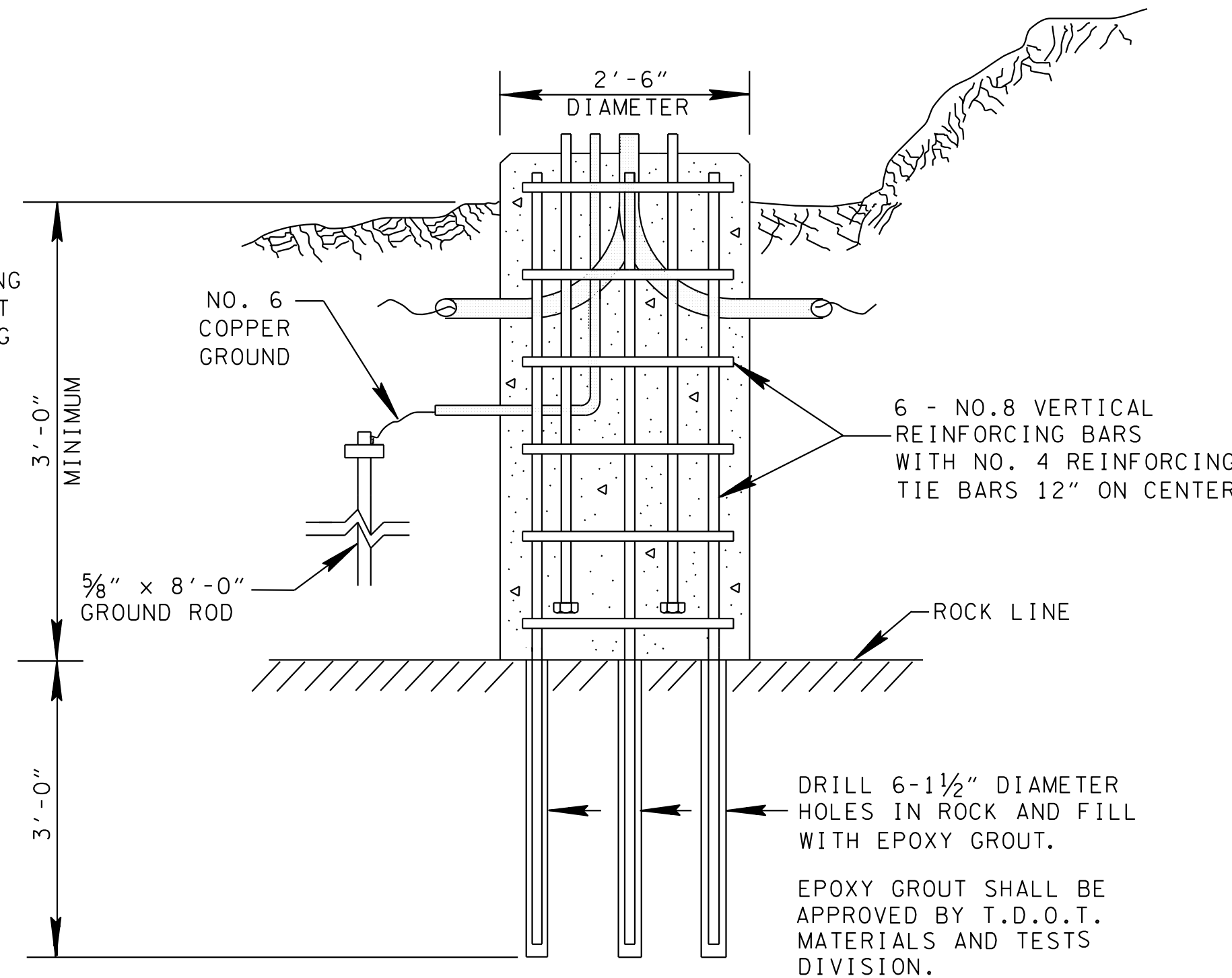


PLAN



30'-50' STANDARD LIGHT FOUNDATION DETAIL

MINIMUM HIGH MAST FOOTING DEPTHS FOR ESTIMATING PURPOSES	
TOWER HEIGHT	MINIMUM FOOTING DEPTH
100'	14'- 0"
101'- 120'	18'- 0"
121'- 140'	22'- 0"
141'- 150'	26'- 0"



30'-50' STANDARD LIGHT FOUNDATION
DETAIL IN ROCK

GENERAL NOTES

- (A) ANCHOR BOLT CIRCLE DIAMETER SHALL COMPLY WITH POLE MANUFACTURER'S ANCHOR BOLT PATTERN FOR THE SPECIFIC POLE AND BREAKAWAY BASE.
- (B) THE TOP 1'-0" OF THE FOUNDATION MAY BE FORMED SQUARE.
- (C) WHEN NECESSARY DUE TO ROCK, THE GROUND ROD MAY BE PLACED HORIZONTALLY IN THE CONDUIT TRENCH, A 3 INCH MINIMUM SEPARATION FROM CONDUIT SHALL BE MAINTAINED.
- (D) FOUNDATION SHALL BE PLACED AGAINST UNDISTURBED SOIL. IF ROCK OR WATER IS ENCOUNTERED DURING EXCAVATION FOR FOUNDATION, THE CONTRACTOR MAY PROPOSE MODIFICATIONS TO THE FOUNDATION DESIGN, SUBJECT TO THE REVIEW AND APPROVAL OF THE ENGINEER.
- (E) GROUND PROFILE SHOULD DRAIN WATER AWAY FROM FOUNDATION.
- (F) SEE STRUCTURES STD. DWG. STD-8-4 FOR ADDITIONAL DESIGN AND MATERIAL SPECIFICATIONS.

MINOR REVISION -- FHWA
APPROVAL NOT REQUIRED.

STATE OF TENNESSEE
DEPARTMENT OF TRANSPORTATION

STANDARD LIGHTING
FOUNDATION
DETAILS

- REV. 11-12-93: NEW SHEET TRANSFERRED INFORMATION FROM T-L-1. ADDED METAL FOUNDATION DETAIL ALTERNATE.
- REV. 5-27-94: ADDED TABLE FOR HIGH MAST FOOTING AND GROUNDING CONDUCTOR SIZE.
- REV. 10-26-95: MODIFIED DESCRIPTION OF REINFORCING STEEL. CHANGED SIZE OF GROUND ROD ON HIGH MAST FOUNDATION DETAIL.
- REV. 12-16-03: DELETED GROUNDING CONDUCTOR CHART. ADDED NOTE E.
- REV. 7-29-04: CHANGED DRAWING NO. FROM T-L-1A TO T-L-1. ADDED GENERAL NOTE E. DELETED GROUNDING CONDUCTOR SIZE TABLE.
- REV. 02-15-07: ADDED ANCHOR BOLT DETAIL. NOTES AND NOTE E AND F ADDED.
- REV. 12-4-13: CHANGED ANCHOR BOLTS TO THREADED. ADDED BEARING AREA TABLE.